

This school year, we will reach
45,000 kids— but more still need us.

Help us reach every student.



WALK FOR A HEALTHY COMMUNITY



May 11, 2019 9:00AM
Stage AE on North Shore

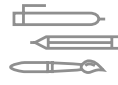
Sign Up at Walkforahealthycommunity.org



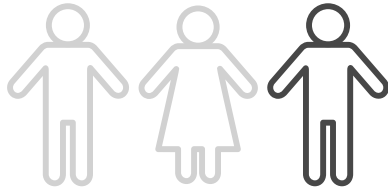
As school budgets shrink



the burden falls on families



and kids are left without the tools they need



1 in 3 kids in our community go to school without basic school supplies, like pencils and paper.

Without supplies, kids can't take part in the classroom, much less learn and grow.

Sound shocking? Most people don't realize this is a problem— which makes solving it even harder. But that's where we come in.



Think of the Education Partnership as the **go-to resource for school supplies.**

We support the most in-need schools in Allegheny and surrounding counties with simple, proven programs. This year, we will distribute **\$4+ million** in critical school supplies.

This school year, we will reach 45,000 kids—but more still need us.



WALK FOR A HEALTHY COMMUNITY



About the Highmark Walk:

The Highmark Walk for a Healthy Community is an annual fundraising walk that benefits local health and human service agencies. The primary goal of the walk is to help participating organizations raise money for their individual missions. The walk will take place on **May 11th, 2019 at 9:00AM**. Each organization keeps 100% of the donations raised for their mission from the walk.

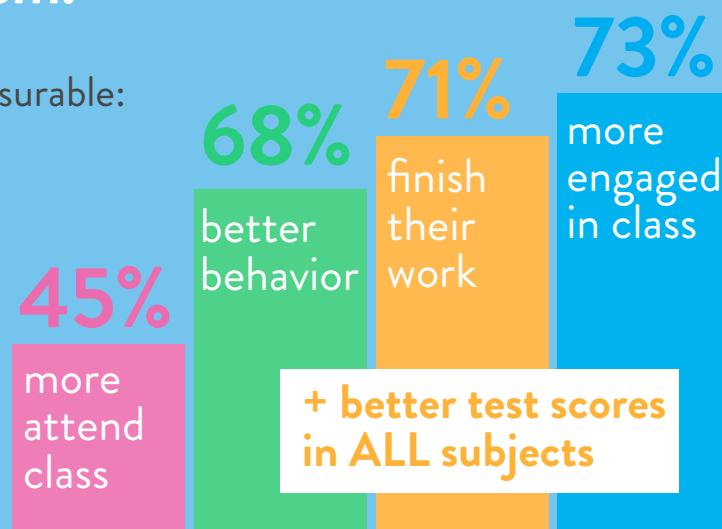
Your gift will impact students today and for years to come.

“Supplies from The Education Partnership make students feel special because when I bring in the extra supplies they can use whatever they like. The smiles on their faces are always fun to see.”

-Pittsburgh Public 1st Grade Teacher

Giving kids the tools to participate in the classroom doesn't just prepare them.
It empowers them.

And the results are measurable:



Learn more about how we're impacting local kids at TheEducationPartnership.org

1 in 3 kids in our community doesn't have the tools they need to learn at school.

Let's fix that.



	Champion Level	Extra Mile Level	Hero Level	Medalist Level	Supporter Level
	\$5,000+	\$2,500	\$1,000	\$500	\$250
Social media recognition	●	●	●	●	●
Hyperlink to your website from our website event page	●	●	●	●	
Signage at The Education Partnership booth	●	●	●		
Named as Donor Spotlight in monthly newsletter which goes out to over 9,500 people each month	●	●			
Press release naming sponsorship	●				

COMPANY/DONOR (as it should appear on sponsorship): _____

IF COMPANY, NAME OF CONTACT PERSON: _____

ADDRESS: _____ CITY: _____

STATE: _____ ZIP: _____ PHONE: _____

EMAIL: _____

Please return completed sponsorship form to:
 The Education Partnership
 Attn: Kiki McGuinn
 281 Corliss Street
 Pittsburgh, PA 15220

Or contact Kiki directly: kiki@theeducationpartnership.org

We will contact you shortly after receiving your completed form to confirm the details of your sponsorship.